

UNITED STATES
DEPARTMENT OF THE INTERIOR

This mining plan approval document is issued by the United States of America to:

Westmoreland San Juan Mining, LLC.
San Juan Mine, 300 County Road 6800
Waterflow, NM 87421

for a mining plan modification for Federal Coal Leases NM 045197 and NM 028093 at the San Juan Mine, New Mexico Coal Mine State Permit #19-01. Westmoreland San Juan Mining, LLC is hereinafter referred to as the operator. This approval is subject to the following conditions.

1. Statutes and Regulations: This federal mining plan modification approval is issued pursuant to Federal Coal Leases NM 045197 and NM 028093; the Mineral Leasing Act of 1920, as amended (30 U.S.C. §§ 181 *et seq.*); and in the case of acquired lands, the Mineral Leasing Act for Acquired Lands of 1947, as amended (30 U.S.C. §§ 351 *et seq.*). This mining plan modification approval is subject to all applicable laws and regulations of the Secretary of the Interior that are now or hereafter in force; and all such laws and regulations are made part hereof. The operator must comply with the provisions of the Federal Water Pollution and Control Act (33 U.S.C. §§ 1251 *et seq.*), the Clean Air Act (42 U.S.C. §§ 7401 *et seq.*), and other applicable Federal laws.
2. This document approves a federal mining plan modification for San Juan New Mexico Coal Mine State Permit #19-01, Federal Coal Leases NM 045197 and NM 028093 at San Juan Mine and authorizes a postmining land use change from wildlife habitat and livestock grazing to industrial on Federal leases within the mine permit area. This authorization is for the Federal coal lands within the mining plan area as described:

Township 30 North, Range 15 West, 5th P.M.
Section 14: 21.24 acres
Section 15: 34.47 acres
Section 22: 1.69 acres

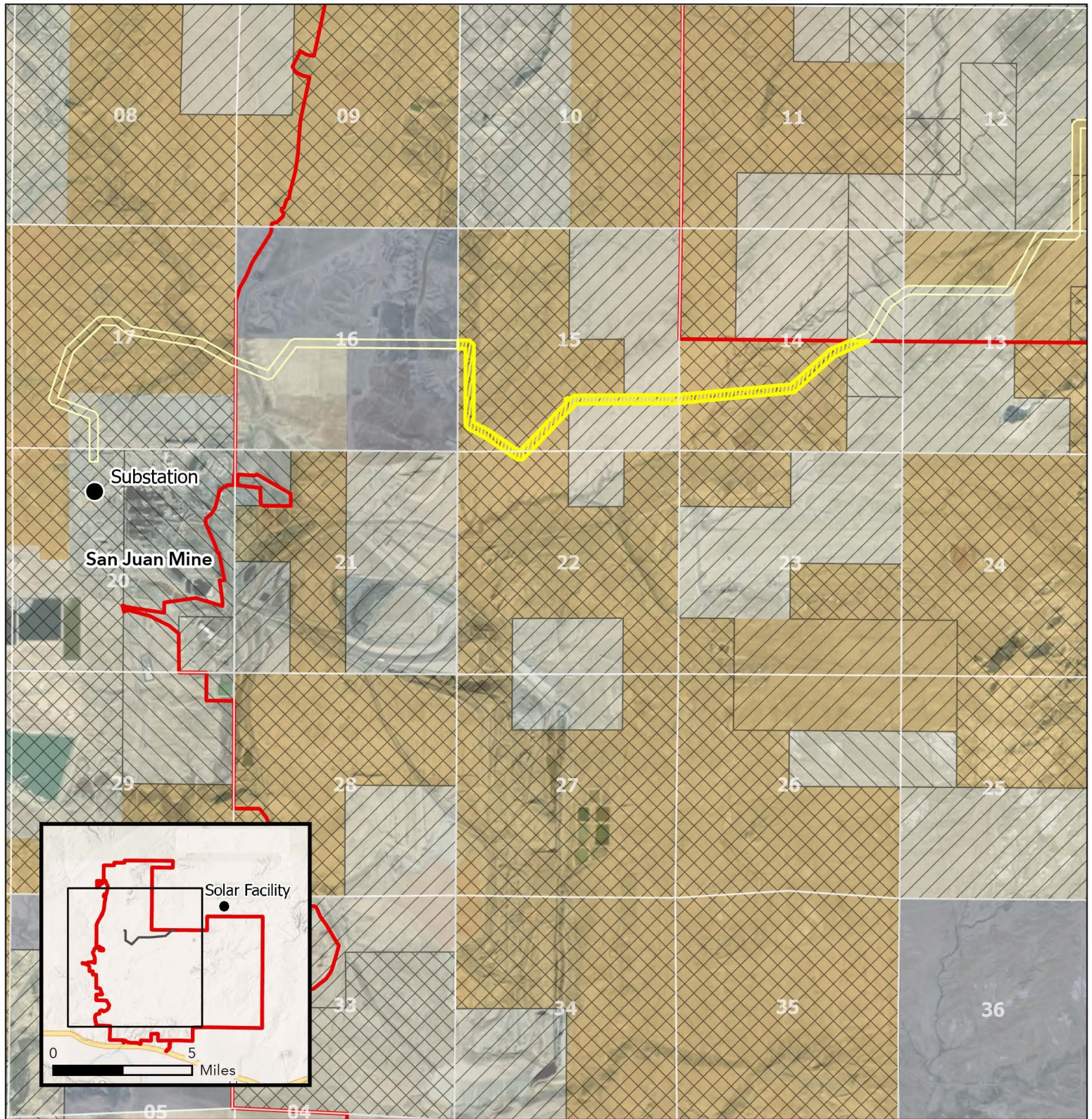
This land encompasses 57.4 acres and is found on the map as shown in appended attachments hereto referred as Attachment A and Attachment B.

3. The operator must comply with the terms and conditions of the leases, this mining plan modification approval, and the requirements of New Mexico Coal Mine State Permit #19-01 issued under New Mexico Energy, Minerals and Natural Resource Department Program, approved pursuant to the Surface Mining Control and Reclamation Act of 1977 (30 U.S.C. §§ 1201 *et seq.*). The Secretary retains the authority and jurisdiction to modify or cancel this approval for failure to comply with any of these items or other applicable laws and regulations.




4. This mining plan modification approval is binding on any person conducting coal development or mining operations under the approved mining plan and will remain in effect until superseded, canceled, or withdrawn.
5. If, during mining operations, unidentified prehistoric resources are discovered, the operator must ensure that the resources are not disturbed and must notify New Mexico Energy, Minerals and Natural Resource Department and Office of Surface Mining Reclamation and Enforcement. The operator must take such actions as are required by New Mexico Energy, Minerals and Natural Resource Department in coordination with the Office of Surface Mining Reclamation and Enforcement.
6. The Secretary retains jurisdiction to modify or cancel this approval, as required, on the basis of further consultation with the U.S. Fish and Wildlife Service pursuant to Section 7 of the Endangered Species Act, as amended, 16 U.S.C. § 1531 *et seq.*

Adam G. Suess
Acting Assistant Secretary,
Land and Minerals Management

Attachments: A and B



-  Proposed Post Mine Land Use Change Area (57.4 acres)
-  Gen-tie ROW
-  San Juan Mine Permit Boundary

- Federal Mineral Ownership**
-  All Minerals
 -  Coal Only
 -  Oil, Gas, and Coal

- Surface Management Agency**
-  BLM
 -  State
 -  Private or Unknown

San Juan Mine Proposed Post Mine Land Use Change

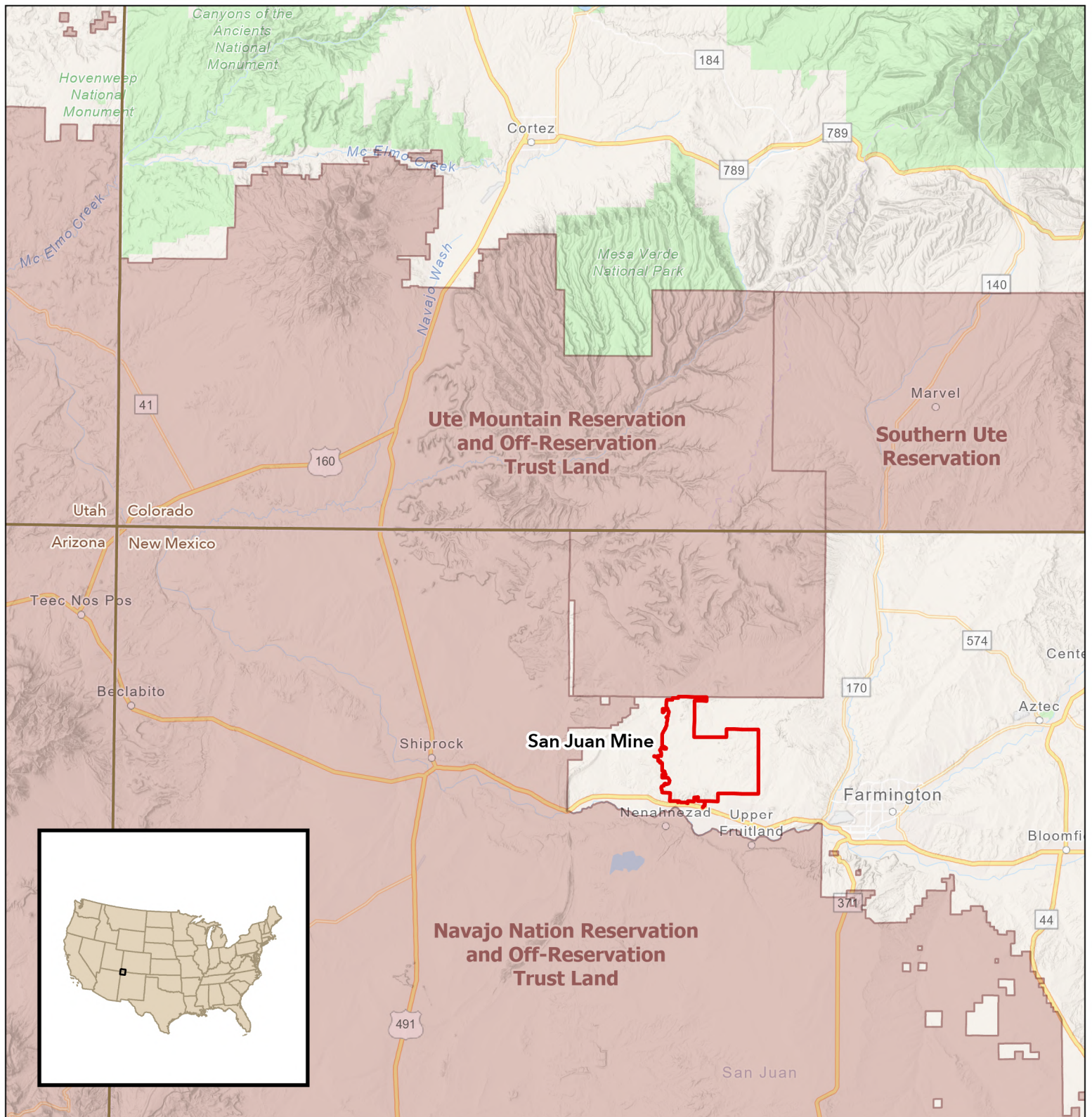
Created by the Office of Surface Mining Reclamation and Enforcement
Map Date: 1/27/2025

*San Juan County, New Mexico
Township 30 North, Range 15 West, Sections 14, 15, 22
New Mexico Principle Meridian*



0 0.5 1 Miles





- San Juan Mine Permit Boundary
- Federal American Indian Reservation
- State Boundary

Sources: San Juan County, Esri, TomTom, Garmin, SafeGraph, FAO, METI/NASA, USGS, Bureau of Land Management, EPA, NPS, USFWS, Airbus, USGS, NGA, NASA, CGIAR, NCEAS, NLS, OS, NMA, Geodatastyrelsen, GSA, GSI and the GIS User Community. Other data received from Westmoreland San Juan Mining LLC and DESRI.

San Juan Mine San Juan Mine Vicinity

Created by the Office of Surface Mining Reclamation and Enforcement
Map Date: 10/24/2024

*San Juan County, New Mexico
Township 30 North, Range 15 West
New Mexico Principle Meridian*



0 10 20 Miles

