

UNITED STATES
DEPARTMENT OF THE INTERIOR

This mining plan approval document is issued by the United States of America to:

Warrior Met Coal BC, LLC
Blue Creek Mine No. 1
16243 Highway 216
Brookwood, AL 35444

for a mining plan for Federal Coal Lease ALES-056519 at Blue Creek Mine No. 1. Warrior Met Coal BC, LLC is hereinafter referred to as the operator. This approval is subject to the following conditions.

1. Statutes and Regulations: This mining plan approval is issued pursuant to Federal Coal Lease ALES-056519; the Mineral Leasing Act of 1920, as amended (30 U.S.C. §§ 181 *et seq.*); and in the case of acquired lands, the Mineral Leasing Act for Acquired Lands of 1947, as amended (30 U.S.C. §§ 351 *et seq.*). This mining plan approval is subject to all applicable laws, as well as all Department of the Interior regulations, that are now or hereafter in force; and all such laws and regulations are made part hereof. The operator must comply with the provisions of the Federal Water Pollution and Control Act (33 U.S.C. § 1251 *et seq.*), the Clean Air Act (42 U.S.C. §§ 7401 *et seq.*), and other applicable Federal laws.
2. This document approves the mining plan for Federal Coal Lease ALES-056519 and authorizes coal development and mining operations on parts of the Federal lease within the area of mining plan approval. This approval is based on documentation provided pursuant to 30 C.F.R. § 746.13 and constitutes the approval of a mining plan as required by the Mineral Leasing Act. This authorization is for the Federal coal lands within the mining plan area as described:

Huntsville Meridian, Alabama

Township 17 South, Range 8 West:

Section 5: N1/2SW1/4

Section 6: S1/2NE1/4, N1/2SE1/4, SE1/4SE1/4

Section 7: NE1/4NE1/4, W1/2NW1/4

Section 8: NE1/4NE1/4, SW1/4NE1/4

Township 17 South, Range 9 West:

Section 2: W1/2NW1/4, NW1/4SW1/4

Section 3: W1/2SW1/4, SW1/4SE1/4

Section 4: E1/2NE1/2, SW1/4NE1/4, S1/2SW1/4

Section 5: SW1/4SW1/4, E1/2SE1/4

Section 6: SE1/4NE1/4, E1/2SE1/4
Section 7: NE1/4NE1/4, E1/2SW1/4, SE1/4SE1/4
Section 8: SE1/4NE1/4, S1/2SW1/4, E1/2SE1/4, SW1/4SE1/4
Section 9: NE1/4, SW1/4, SE1/4
Section 10: NE1/4, W1/2NW1/4, SE1/4NW1/4, SW1/4, NW1/4SE1/4
Section 11: W1/2NW1/4, SE1/4SE1/4
Section 13: N1/2NE1/4, SW1/4NE1/4, N1/2SW1/4
Section 14: E1/2NE1/4, E1/2NW1/4, E1/2SE1/4, NW1/4SE1/4
Section 15: W1/2NE1/4, NW1/4, NW1/4SW1/4, NW1/4SE1/4
Section 17: NE1/4, NW1/4, NE1/4SW1/4, SE1/4
Section 18: E1/2NE1/4, NW1/4NE1/4, E1/2NW1/4, W1/2SW1/4
Section 20: NW1/4NE1/4, SW1/4NW1/4
Section 22: NE1/4NW1/4, E1/2SE1/4
Section 23: S1/2NE1/4, NE1/4SE1/4
Section 24: SW1/4NW1/4, E1/2SE1/4
Section 25: NE1/4NE1/4, E1/2SW1/4, NE1/4SE1/4
Section 26: NW1/4NW1/4
Section 27: NE1/4NE1/4, NW1/4SW1/4
Section 30: E1/2SE1/4
Section 31: E1/2NE1/4, SW1/4NE1/4, SE1/4NW1/4
Section 32: NW1/4NW1/4, W1/2SW1/4
Section 35: NE1/4
Section 36: NE1/4, NW1/4, E1/2SW1/4, SE1/4

Township 17 South, Range 10 West:

Section 1: NW1/4SE1/4
Section 12: SE1/4SE1/4
Section 13: NE1/4NE1/4
Section 35: E1/2SW1/4
Section 36: SE1/4NE1/4, N1/2SW1/4

Township 18 South, Range 8 West:

Section 5: N1/2NE1/4, N1/2NW1/4, NW1/4SW1/4
Section 6: W1/2NE1/4, NW1/4, SW1/4, W1/2SE1/4
Section 7: NE1/4NE1/4

Township 18 South, Range 9 West:

Section 1: E1/2NE1/4, NW1/4NE1/4
Section 6: SW1/4NE1/4, E1/2NW1/4, SW1/4NW1/4, W1/2SW1/4
Section 7: S1/2NE1/4, N1/2NW1/4
Section 17: W1/2SW1/4
Section 18: SE1/4NW1/4, N1/2SE1/4

Township 18 South, Range 10 West:

Section 1: NE1/4NW1/4, SE1/4SW1/4, N1/2SE1/4, SW1/4SE1/4

Section 11: E1/2NE1/4

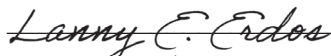
Section 12: NW1/4NE1/4, SE1/4SW1/4

Section 13: NE1/4SW1/4, W1/2SE1/4, SE1/4SE1/4

Total number of acres: 8,346.015 acres

These lands are shown on the map appended hereto as Attachment A.

3. The operator is allowed to conduct coal development and mining operations only as described in the permit approved by the Alabama Surface Mining Commission (ASMC), except as otherwise directed in the conditions of this mining plan approval.
4. The operator must comply with the terms and conditions of the Federal coal lease, this mining plan approval, and the requirements of the ASMC Permit P-3964 issued under the Alabama State program approved pursuant to the Surface Mining Control and Reclamation Act of 1977 (30 U.S.C. §§ 1201 *et seq.*). The Secretary retains the authority and jurisdiction to modify or cancel this approval for failure to comply with any of these items or other applicable laws and regulations.
5. This mining plan approval is binding on any person conducting coal development or mining operations under the approved mining plan and will remain in effect until superseded, canceled, or withdrawn.
6. If, during mining operations, unidentified historic resources are discovered above the Federal Coal Lease tracts, the operator must ensure that the resources are not disturbed and must notify ASMC and the Office of Surface Mining Reclamation and Enforcement (OSM). The operator must take such actions as are required by ASMC in coordination with OSM.
7. The Secretary retains jurisdiction to modify or cancel this approval, as required, on the basis of further consultation with the U.S. Fish and Wildlife Service pursuant to Section 7 of the Endangered Species Act, as amended (16 U.S.C. §§ 1531 *et seq.*).

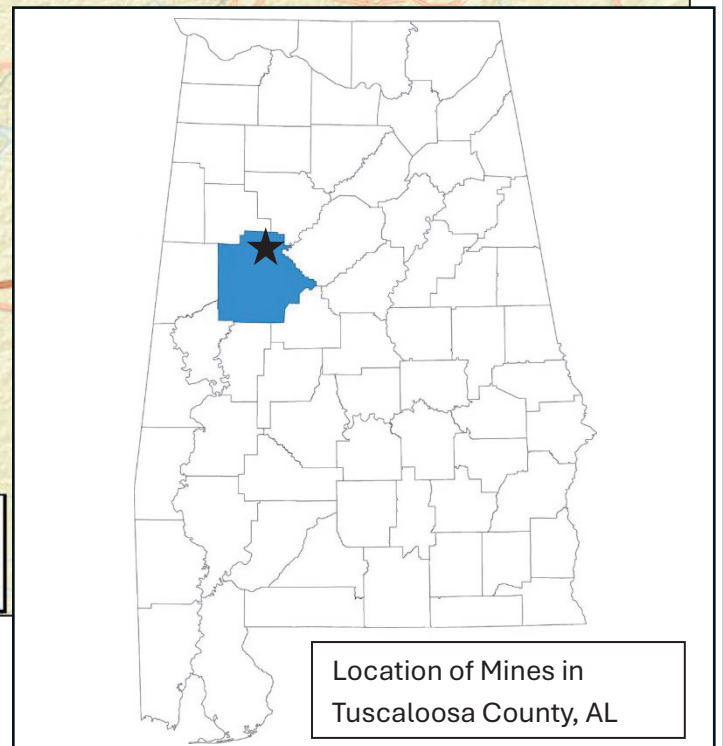
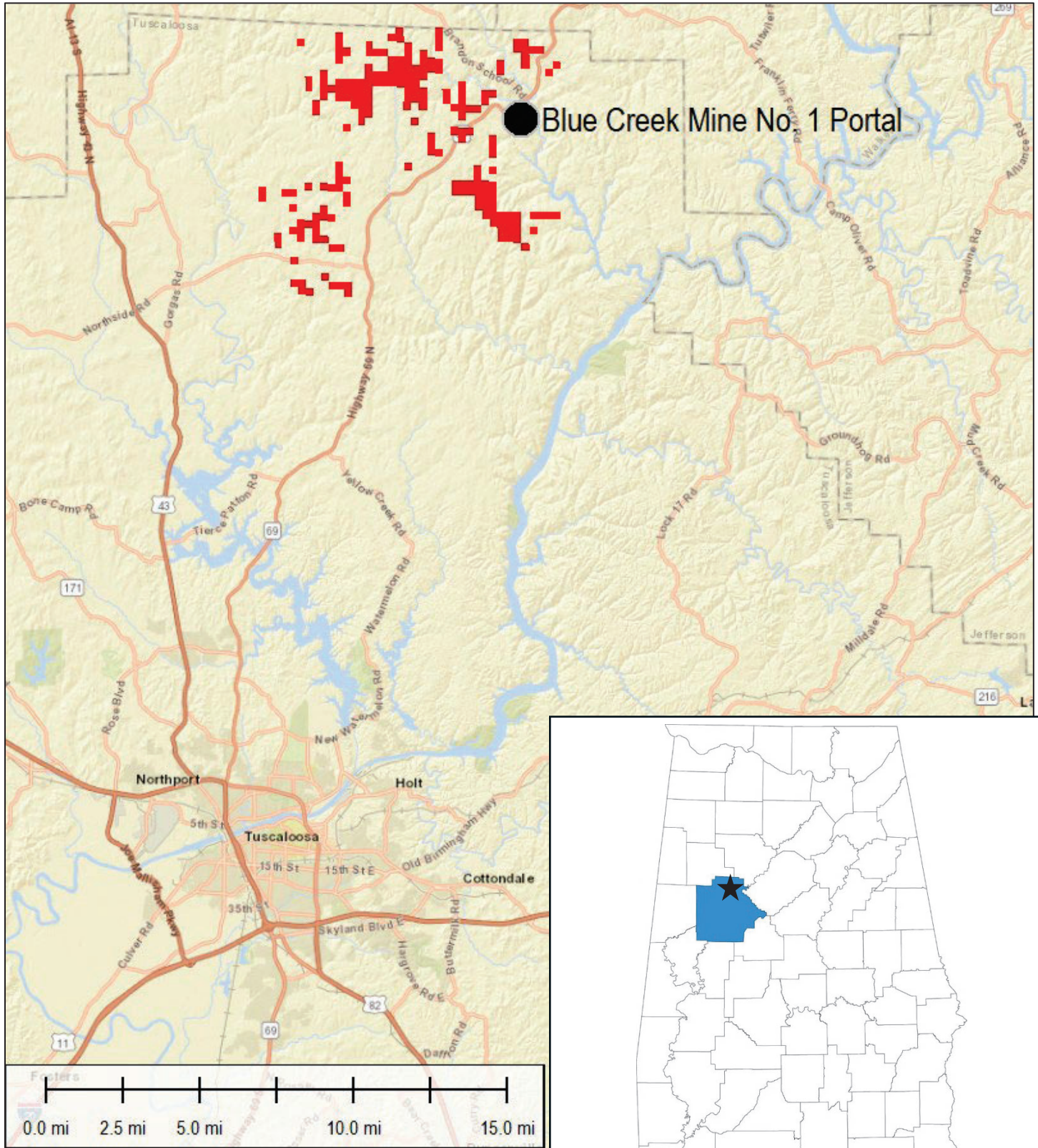

Lanny E. Erdos
Acting Assistant Secretary,
Land and Minerals Management
U.S. Department of the Interior

Date 01/13/2026


Attachment A

Warrior Met Coal Location Map

Federal Coal Lease ALES-056519



Legend

 Federal Coal Lease ALES-056519