

UNITED STATES  
DEPARTMENT OF THE INTERIOR

This mining plan approval document is issued by the United States of America to:

Coyote Creek Mining Company, LLC.  
6502 17<sup>th</sup> Street. SW  
Zap, ND 58580

for a mining plan for Federal Coal Lease NDM-110277 at the Coyote Creek Mine, Permit No. NACC-1302, Revision 11. The approval is subject to the following conditions. Coyote Creek Mine, LLC is hereinafter referred to as the operator.

1. Statutes and Regulations: This mining plan approval is issued pursuant to Federal Coal Lease NDM-110277; the Mineral Leasing Act of 1920, as amended (30 U.S.C. § 181 et seq.); and in the case of acquired lands, the Mineral Leasing Act for Acquired Lands of 1947, as amended (30 U.S.C. § 351 et seq.). This mining plan approval is subject to all applicable laws and regulations of the Secretary of the Interior which are now or hereafter in force; and all such laws and regulations are made part hereof. The operator shall comply with the provisions of the Federal Water Pollution and Control Act (33 U.S.C. § 1251 et seq.), the Clean Air Act (42 U.S.C. § 7401 et seq.), and other applicable Federal laws.
2. This document approves the new mining plan for Federal Coal Lease NDM-110277 at the Coyote Creek Mine and authorizes coal development or mining operations on the Federal lease within the area of mining approval. This authorization is for adding Federal coal lands into an approved mining plan area:

Federal Coal Lease NDM-110277:

Township 143 North, Range 89 West.

SW<sup>1</sup>/<sub>4</sub> Section 24: 124 acres, defined in metes and bounds as:

An area of land located in the southwest quarter of Section 24, T143N, R89W of the Fifth Principal Meridian, Mercer County, North Dakota having the bearings and distances described as follows:

Beginning at the West 1/4 corner of said section 24;  
thence South 89°14'25" East a distance of 254.93 feet;  
thence South 69°39'19" East a distance of 525.98 feet;  
thence North 61°15'35" East a distance of 154.05 feet;  
thence South 80°34'40" East a distance of 97.29 feet;  
thence South 17°30'43" East a distance of 83.56 feet;  
thence South 62°36'47" East a distance of 419.73 feet;  
thence South 04°11'50" West a distance of 214.72 feet;

thence South 35°02'36" East a distance of 417.76 feet;  
thence South 48°58'43" East a distance of 407.84 feet;  
thence South 64°45'45" East a distance of 551.10 feet;  
thence South 62°09'50" East a distance of 216.85 feet;  
thence North 90°00'00" East a distance of 10.35 feet to a point on the south quarter line of said section 24;  
thence South 00°54'35" West a distance of 1,113.06 feet to the south quarter corner of said section 24;  
thence North 89°12'30" West a distance of 2631.90 feet to the southwest quarter corner of said section 24;  
thence North 00°52'00" East a distance of 2637.80 feet to the point of beginning.

And

SE¼ Section 26 (160 acres)

**Total number of acres: 284 acres**

These lands in Federal Coal Lease NDM-110277 encompass 284 acres as shown in appended attachments hereto as Attachments A and B.

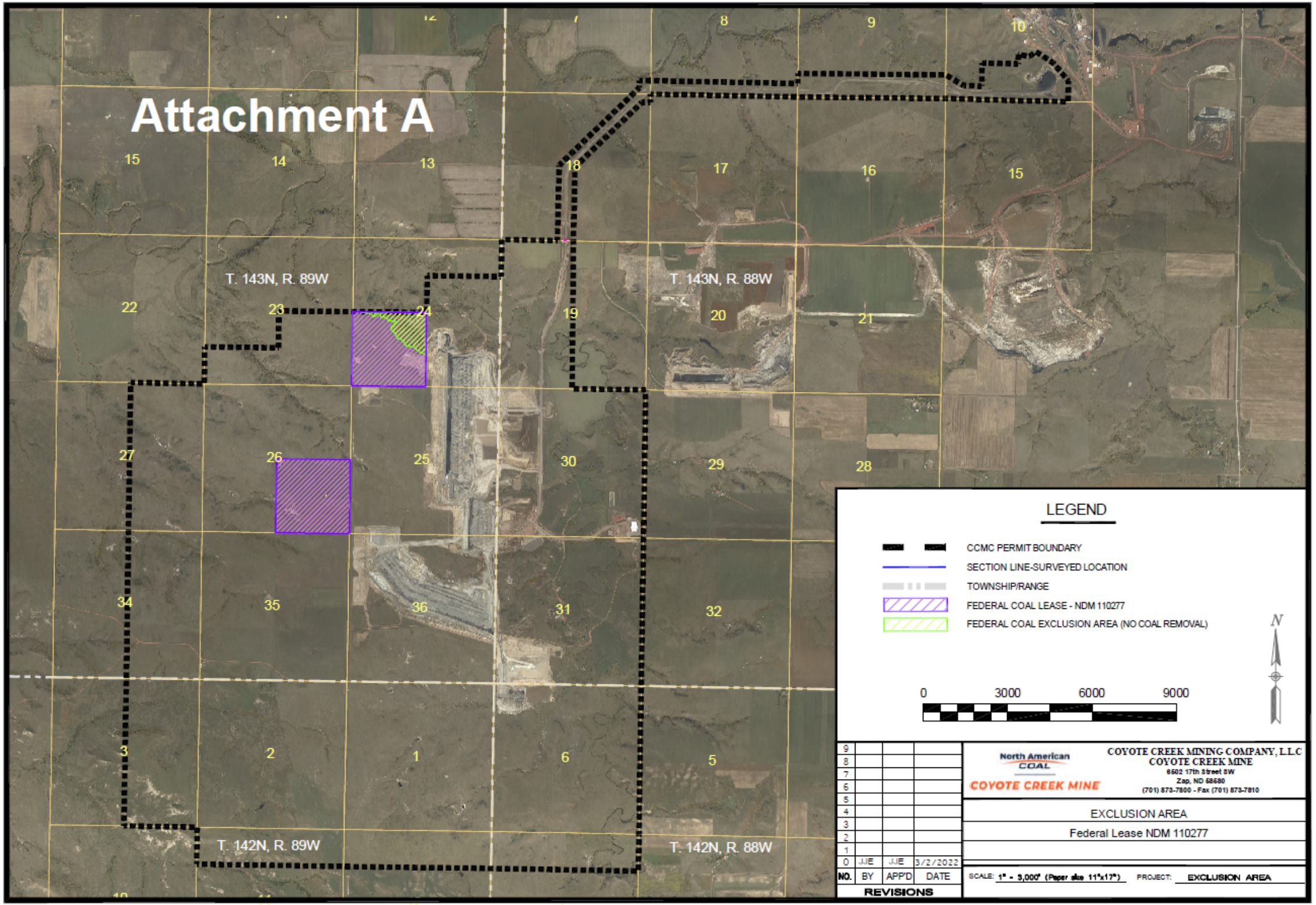
3. The operator shall conduct coal development or mining operations only as described in the complete permit application package and approved by the North Dakota Public Service Commission, except as otherwise directed in the conditions of this mining plan approval.
4. The operator shall comply with the terms and conditions of the lease, this mining plan approval, and the requirements of North Dakota Permit No. NACC-1302 issued under the North Dakota State Program, approved pursuant to the Surface Mining Control and Reclamation Act of 1977 (30 U.S.C. § 1201 et seq.). The Secretary retains the authority and jurisdiction to modify or cancel this approval for failure to comply with any of these items or other applicable laws and regulations.
5. This mining plan approval shall be binding on any person conducting coal development or mining operations under the approved mining plan and shall remain in effect until superseded, canceled, or withdrawn.
6. If, during mining operations, unidentified prehistoric resources are discovered, the operator shall ensure that the resources are not disturbed and shall notify the North Dakota Public Service Commission and the Office of Surface Mining Reclamation and Enforcement. The operator shall take such actions as are required by the North Dakota Public Service Commission in coordination with the Office of Surface Mining Reclamation and Enforcement.
7. The Secretary retains jurisdiction to modify or cancel this approval, as required, on the basis of further consultation with the U.S. Fish and Wildlife Service pursuant to section 7 of the Endangered Species Act, as amended, 16 U.S.C. § 1531 et seq.

---





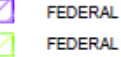
Steven H. Feldgus  
Principal Deputy Assistant Secretary,  
Lands and Minerals Management

Attachments A and B

# Attachment A




## LEGEND

-  CCMC PERMIT BOUNDARY
-  SECTION LINE-SURVEYED LOCATION
-  TOWNSHIP/RANGE
-  FEDERAL COAL LEASE - NDM 110277
-  FEDERAL COAL EXCLUSION AREA (NO COAL REMOVAL)

0 3000 6000 9000



9			
8			
7			
6			
5			
4			
3			
2			
1			
0	JJE	JJE	3/2/2022
NO.	BY	APP'D	DATE
REVISIONS			


**COYOTE CREEK MINING COMPANY, L.L.C**  
**COYOTE CREEK MINE**  
 8602 17th Street SW  
 Zap, ND 58680  
 (701) 873-7800 - Fax (701) 873-7810

---

EXCLUSION AREA

---

Federal Lease NDM 110277

---

SCALE: 1" = 3,000' (Paper size 11"x17") PROJECT: EXCLUSION AREA

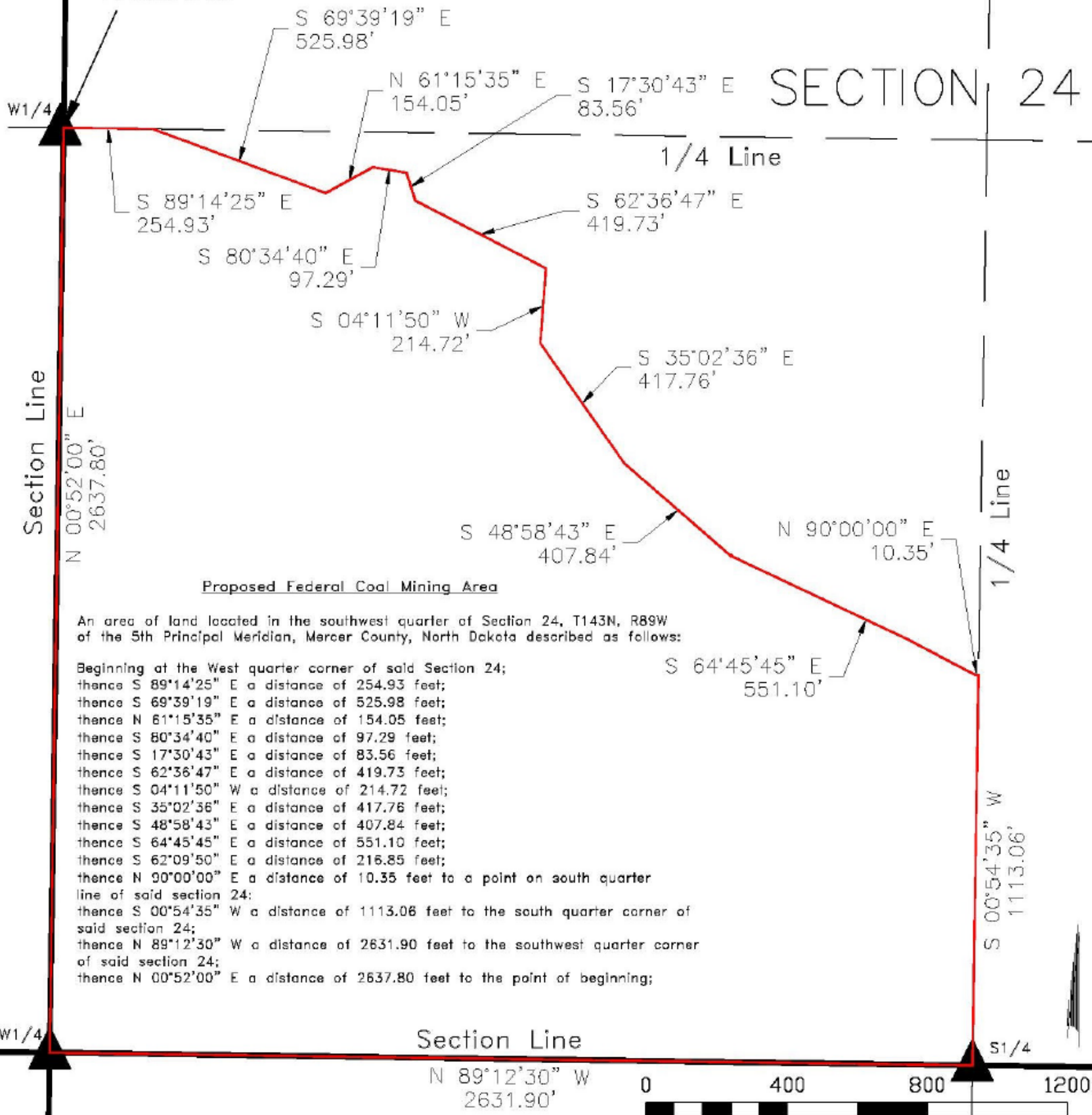


# Attachment B

## PLAT OF

Proposed Federal Coal Mining Area SW 1/4 Section 24, T143N, R89W

POINT OF BEGINNING



**Proposed Federal Coal Mining Area**

An area of land located in the southwest quarter of Section 24, T143N, R89W of the 5th Principal Meridian, Mercer County, North Dakota described as follows:

Beginning at the West quarter corner of said Section 24;  
 thence S 89°14'25" E a distance of 254.93 feet;  
 thence S 69°39'19" E a distance of 525.98 feet;  
 thence N 61°15'35" E a distance of 154.05 feet;  
 thence S 80°34'40" E a distance of 97.29 feet;  
 thence S 17°30'43" E a distance of 83.56 feet;  
 thence S 62°36'47" E a distance of 419.73 feet;  
 thence S 04°11'50" W a distance of 214.72 feet;  
 thence S 35°02'36" E a distance of 417.76 feet;  
 thence S 48°58'43" E a distance of 407.84 feet;  
 thence S 64°45'45" E a distance of 551.10 feet;  
 thence S 62°09'50" E a distance of 216.85 feet;  
 thence N 90°00'00" E a distance of 10.35 feet to a point on south quarter line of said section 24;  
 thence S 00°54'35" W a distance of 1113.06 feet to the south quarter corner of said section 24;  
 thence N 89°12'30" W a distance of 2631.90 feet to the southwest quarter corner of said section 24;  
 thence N 00°52'00" E a distance of 2637.80 feet to the point of beginning;



**LEGEND**

- ▲ SURVEYED SECTION CORNERS
- PROPOSED MINING AREA

9			
8			
7			
6			
5			
4			
3			
2			
1	JMF	JMF	01/31/24
0	JMF	JMF	01/29/24
NO.	BY	APP'D	DATE
REVISIONS			

**North American COAL**

**COYOTE CREEK MINE**

COYOTE CREEK MINING COMPANY, L.L.C.  
 6502 17th Street SW  
 Zap, ND 58580  
 (701) 873-7800 - Fax (701) 873-7810

---

Proposed Federal Coal Mining Area

---

SECTION 24 T143R R89

---

SCALE: AS SHOWN ON MAP (paper size 8.5" x 11")

PROJECT: Proposed Mining Area      REVISION: