

UNITED STATES
DEPARTMENT OF THE INTERIOR

This mining plan approval document is issued by the United States of America to:

Spring Creek Coal, LLC.
2518 Windmill Road
P.O. Box 67
Decker, MT 59025

for a mining plan modification for Federal Lease MTM-069782 at the Spring Creek Mine. This mining plan approval supplements all previous mining plan approvals for the Spring Creek Mine. The approval is subject to the following conditions. Spring Creek Coal, LLC is hereinafter referred to as the operator.

1. Statutes and Regulations: This mining plan approval is issued pursuant to Federal Lease MTM-069782; the Mineral Leasing Act of 1920, as amended (30 U.S.C. § 181 et seq.); and in the case of acquired lands, the Mineral Leasing Act for Acquired Lands of 1947, as amended (30 U.S.C. § 351 et seq.). This mining plan approval is subject to all applicable laws and regulations of the Secretary of the Interior which are now or hereafter in force; and all such laws and regulations are made part hereof. The operator shall comply with the provisions of the Federal Water Pollution and Control Act (33 U.S.C. § 1251 et seq.), the Clean Air Act (42 U.S.C. § 7401 et seq.), and other applicable Federal laws.

2. This document approves the mining plan modification for Federal Lease MTM-069782 at the Spring Creek Mine and authorizes coal development or mining operations on the Federal lease within the area of mining approval. This authorization expands the approved mining plan area into the following Federal coal lands:

MTM-069782

T.8 S., R.40 E., P.M.M.

Sec. 31: Lots 2, 3, 4, NW1/4NE1/4SW1/4, S1/2NE1/4SW1/4,
SE1/4SW1/4, NW1/4SW1/4SE1/4, S1/2SW1/4SE1/4, SW1/4SE1/4SE1/4

T.9 S., R.40 E., P.M.M.

Sec. 6: Lots 1, 2, 3, 4, SW1/4NE1/4, NW1/4SE1/4NE1/4, S1/2SE1/4
NE1/4, N1/2SE1/4NW1/4, N1/2NE1/4SE1/4, NE1/4NW1/4SE1/4

These lands in Federal Lease MTM-069782 modification encompass 498.11 acres and are found on the United States Geological Service 7.5 minute Quadrangle map of Pearl School, Decker and Half Moon Hill as shown in the map appended hereto as Attachment A.

3. The operator shall conduct coal development or mining operations only as described in the complete permit application package, and approved by the Montana Department of

Environmental Quality, except as otherwise directed in the conditions of this mining plan approval.

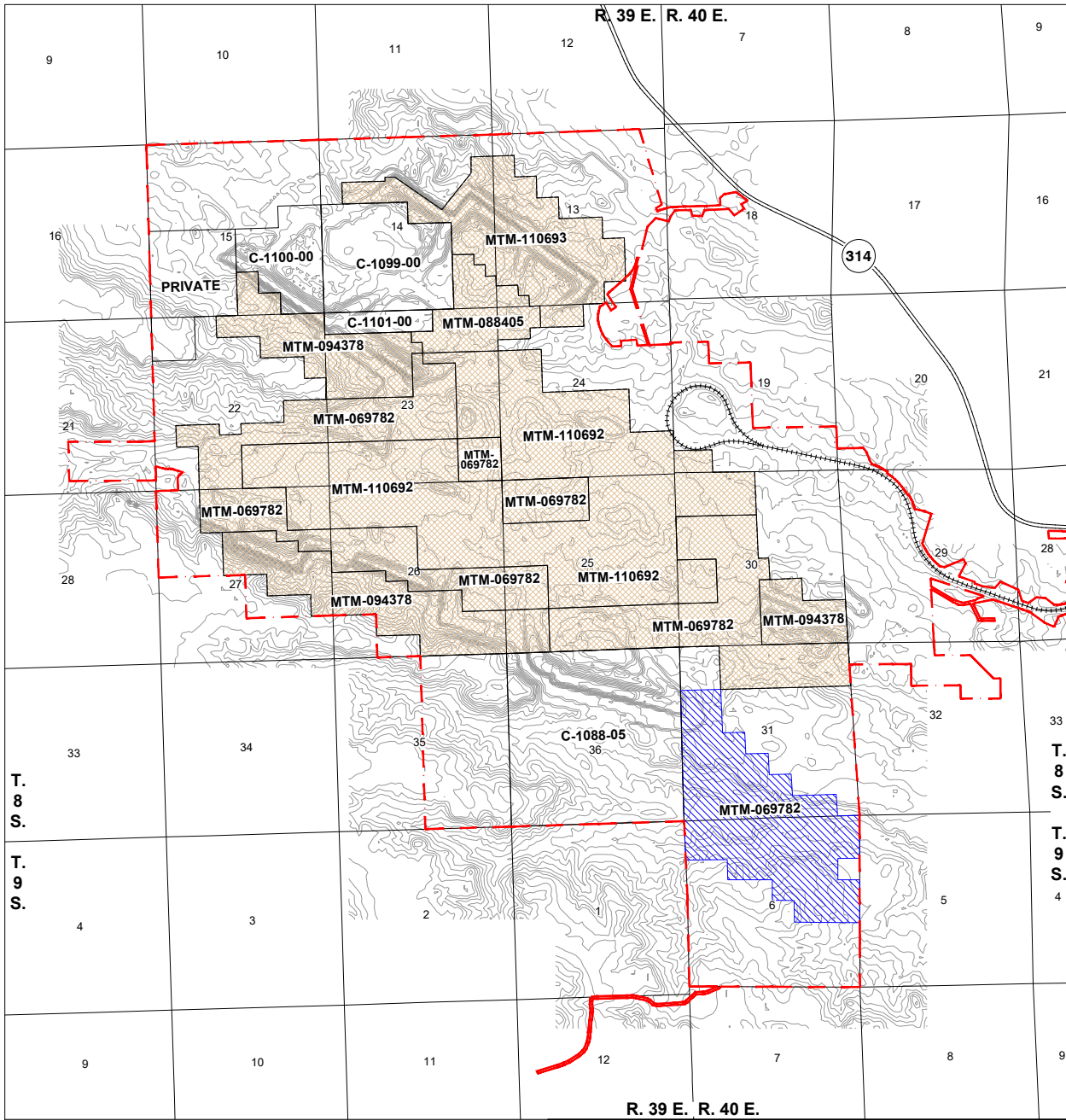
4. The operator shall comply with the terms and conditions of the Lease, this mining plan approval, and the requirements of Montana Permit No. C1979012 issued under the Montana State Program, approved pursuant to the Surface Mining Control and Reclamation Act of 1977 (30 U.S.C. § 1201 et seq.).
5. This mining plan approval shall be binding on any person conducting coal development or mining operations under the approved mining plan and shall remain in effect until superseded, canceled, or withdrawn.
6. If, during mining operations, unidentified prehistoric resources are discovered, the operator shall ensure that the resources are not disturbed and shall notify the Montana Department of Environmental Quality and the Office of Surface Mining Reclamation and Enforcement. The operator shall take such actions as are required by the Montana Department of Environmental Quality in coordination with the Office of Surface Mining Reclamation and Enforcement.
7. The Secretary retains jurisdiction to modify or cancel this approval, as required, on the basis of further consultation with the U.S. Fish and Wildlife Service pursuant to section 7 of the Endangered Species Act, as amended, 16 U.S.C. § 1531 et seq.

Casey Hammond
Principal Deputy Assistant Secretary,
Exercising the authority of the Assistant Secretary
Land and Minerals Management




Date

Attachment

Attachment A



LEGEND

-  Spring Creek Mine Permit Boundary
-  Currently Approved Mining Plan Area
-  Modification Area - LBM MTM-069782
- C-1088-95** State Lease Numbers
- MTM-069782** Federal Lease Numbers

MINING PLAN APPROVAL AREA(S)
LBM Federal Mining Plan
Spring Creek Mine

No warranty is made by the OSMRE for the use of the data for purposes not intended by the OSMRE.

0 2,500 5,000 7,500 10,000
 GRAPHIC SCALE (FEET)

DATE 06/20 December 2019 25' Contours